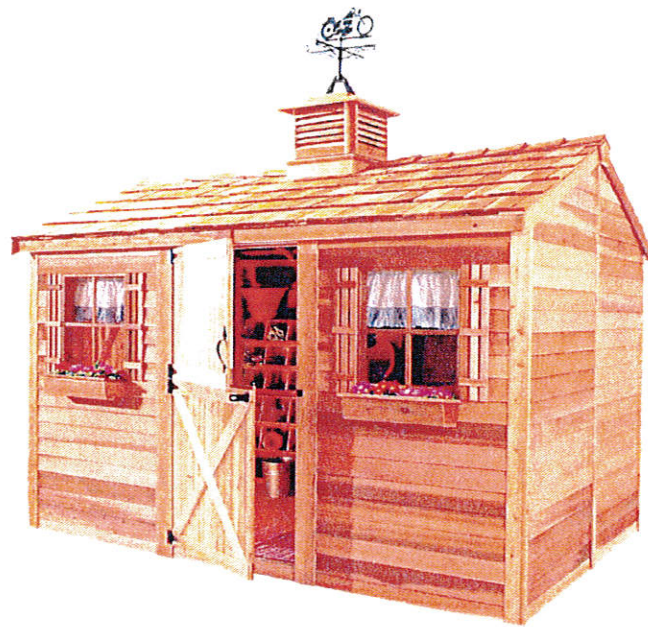


CABANA

12Ft x 10Ft

MODEL C1210



ACCESSORIES, HARDWARE, AND FASTENERS



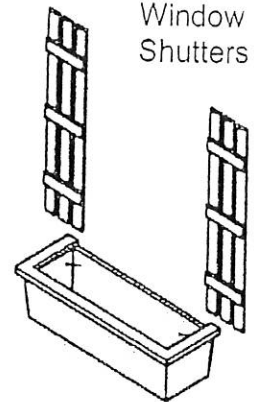
Door Handle



"Cedarshed" plaque

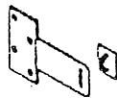


Blank plaque



Window Shutters

Planter box



Hasp



Hinges



Barrel bolt

Fasteners



1 1/8" nails



1 3/4" nails



2" nails



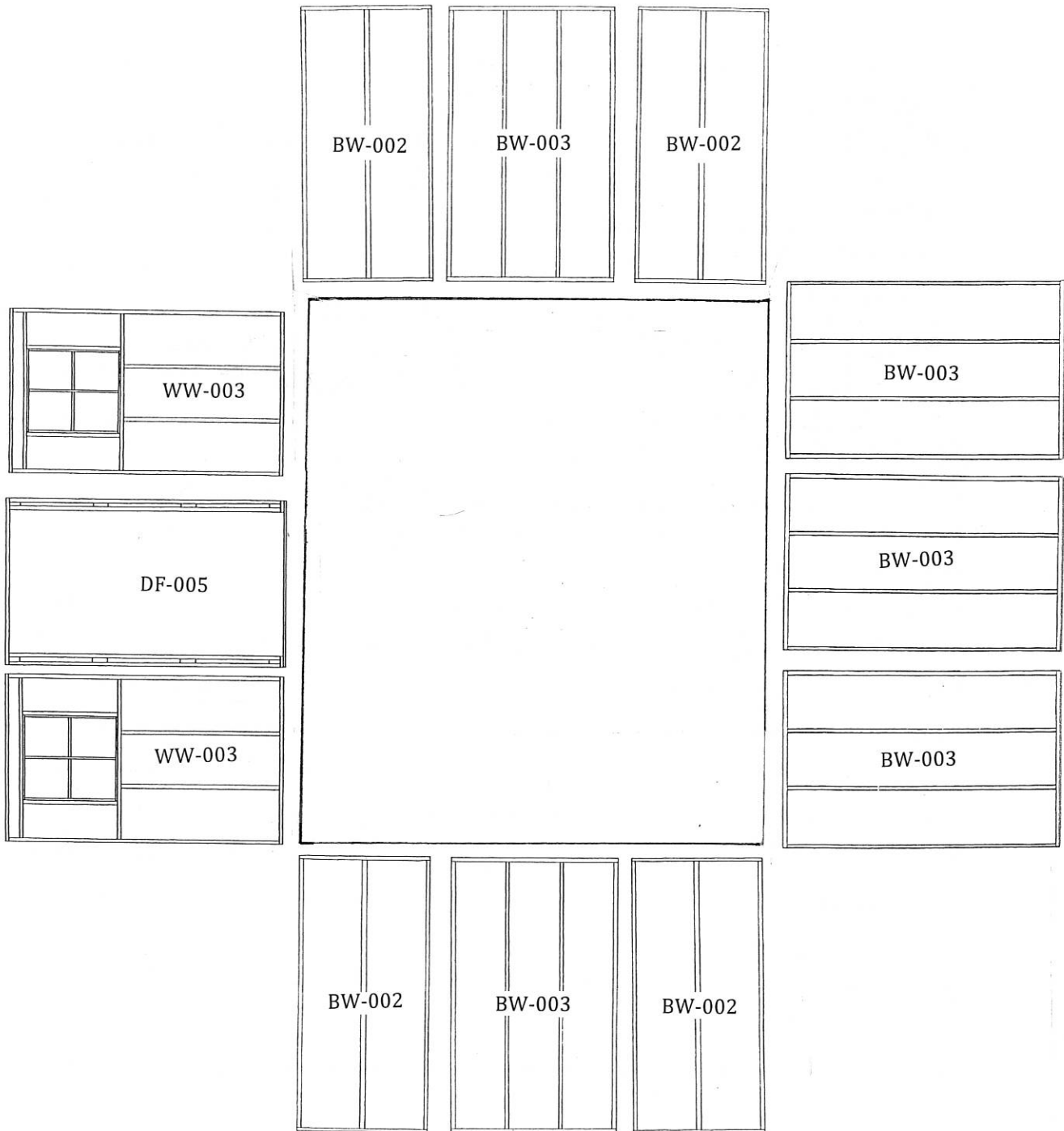
2" screws



3" screws

C1210

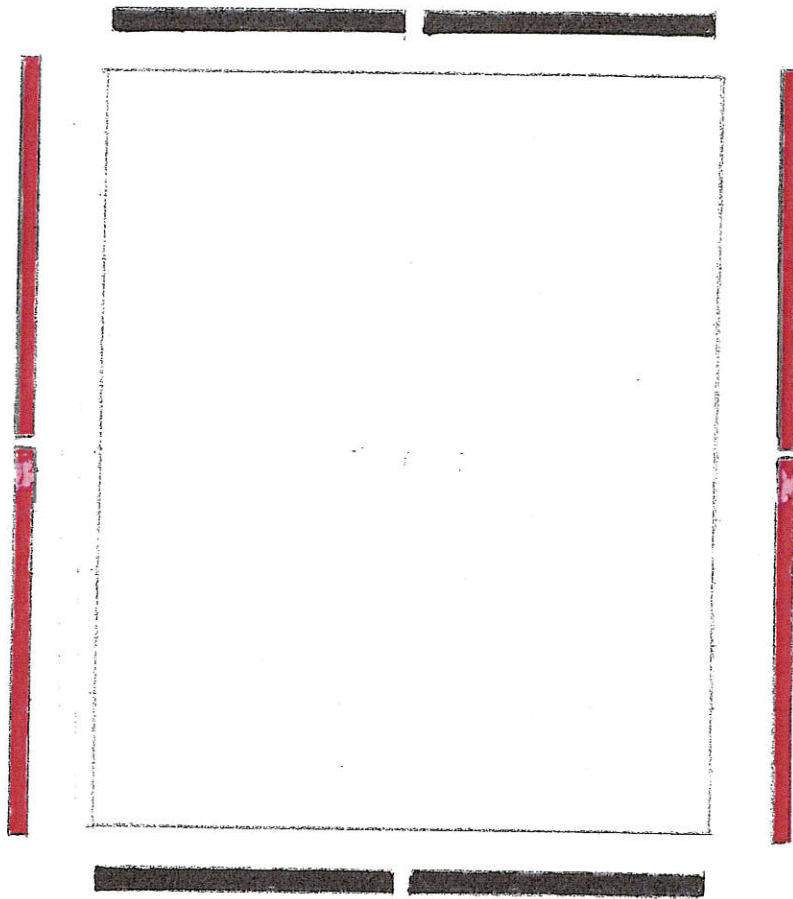
PART #	DESCRIPTION	DIMENSIONS (where app.)	# OF PCS
ACCESSORIES			
P-H-PLAQSL	square CS plaque	square CS plaque	1
P-H-PLAQNL	peak plaque	peak plaque	2
P-FW-001	window box	window box	2
P-SH-001	shutters	shutters	4
FASTENERS			
P-H-NL1.125	nails	1 1/8" nails	25
P-H-NL1.75	nails	1 3/4" nails	300
P-H-NL2	nails	2" nails	50
P-H-SC2	2" screws	2" Screws	175
P-H-SC3	3" screw	3 " Screws	400
DOOR AND HARDWARE			
C-DR-003	Dutch door	Dutch door	1
P-H-THING6	T-Hinges	6 " T-hinges	4
P-H-BBLT4	barrel bolt	4 " barrel bolt	1
P-H-DHAND	door handle	door handle	1
P-H-HASP	hasp	hasp	1
Instruction manual, questionnaire and driver bit			



CABANA 12 x 10

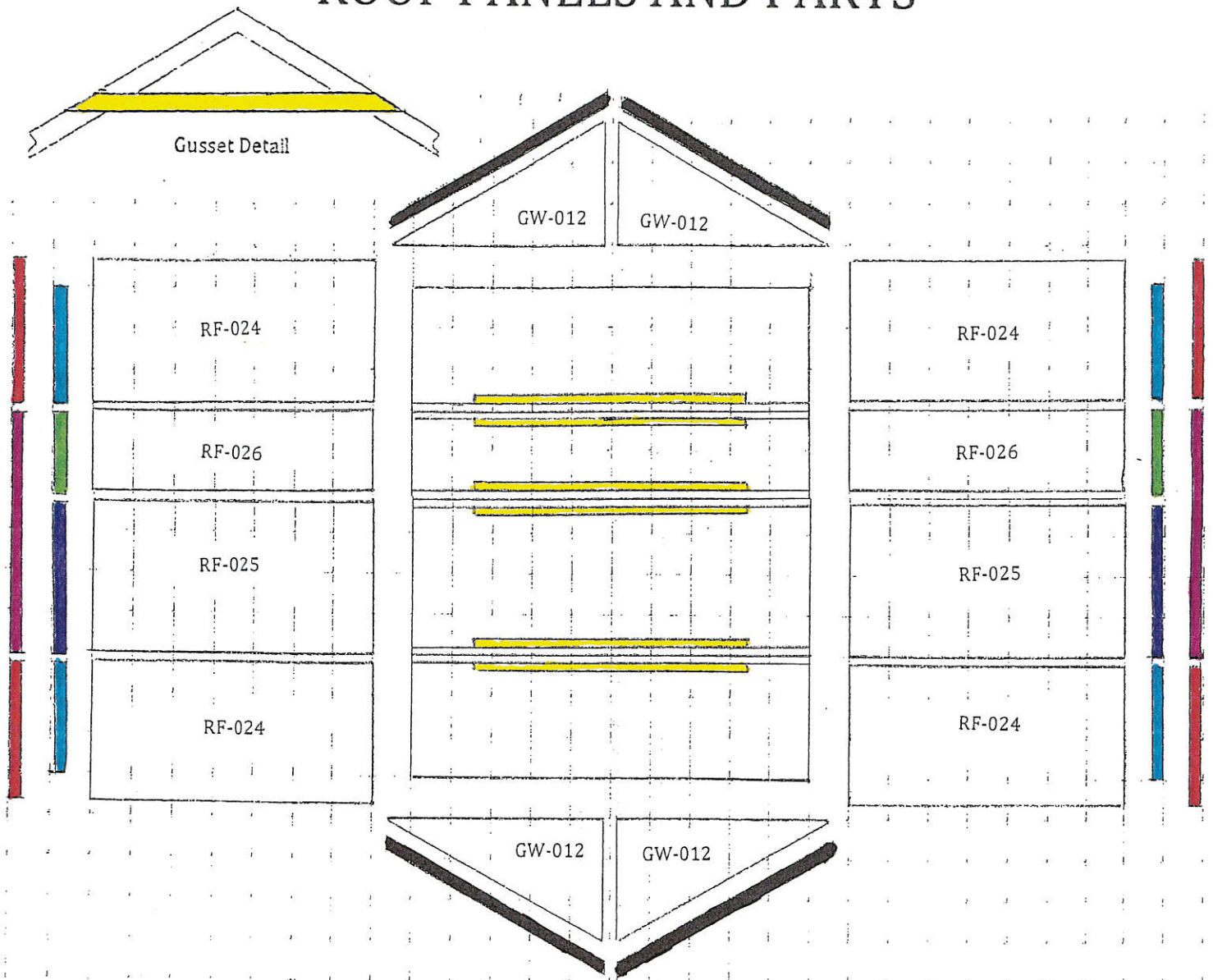
PART #	DESCRIPTION	DIMENSIONS (where app.)	# OF PCS	CODE
WALL PARTS				
P-2334G	header	2 x 3 x 34 1/2	4	not shown
P-2346G	header	2 x 3 x 46 1/2	5	not shown
C-BW-002	wall panel	34 1/2" wall panel	4	BW-002
C-BW-003	wall panel	46 1/2" wall panel	5	BW-003
C-DF-005	door frame	single door frame	1	DF-005
C-WW-003	window wall	46 1/2" window wall	2	WW-003

TOP PLATE PLACEMENT



PART #	DESCRIPTION	DIMENSIONS (where app.)	# OF PCS	CODE
TOP PLATES				
P-2355C	top plates	2 x 3 x 55 1/4	4	
P-2372C	top plates	2 x 3 x 72 1/4	4	

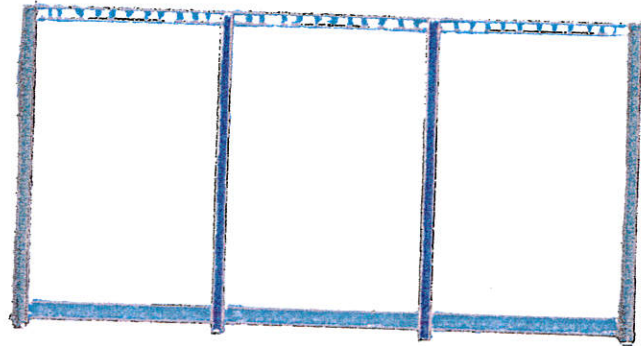
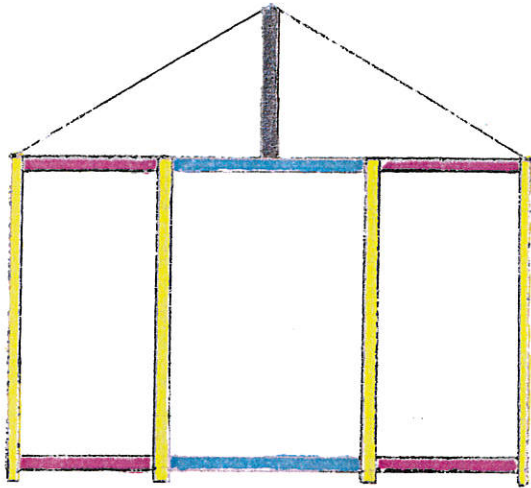
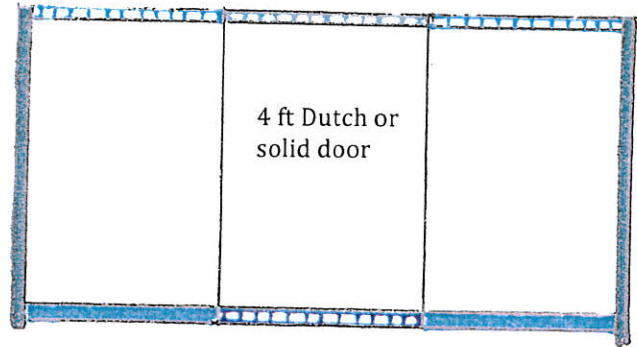
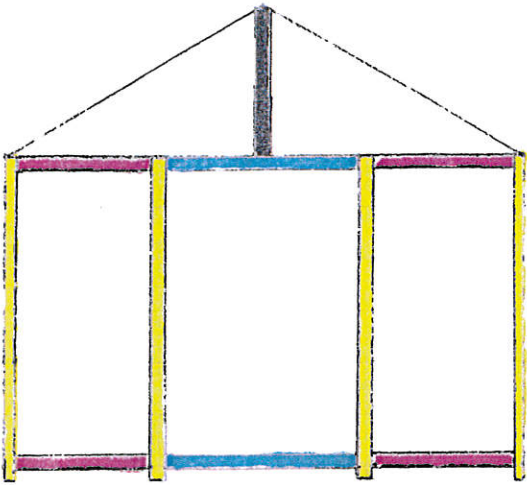
ROOF PANELS AND PARTS








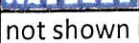



PART #	DESCRIPTION	DIMENSIONS (where app.)	# OF PCS	CODE
ROOF PARTS (WOOD SHINGLES)				
P-2371KYb	gusset	2 x 3 x 71 3/4	6	
C-GW-012	gable wall	25 3/4 x 67 1/8	4	GW-012
C-RF-024	roof panel	42 3/4 x 67 1/8	4	RF-024
C-RF-025	roof panel	46 1/2 x 67 1/8	2	RF-025
C-RF-026	roof panel	24 x 67 1/8	2	RF-026
P-B-G424	soffits	1/2 x 4 x 24	2	
P-B-G437	soffits	1/2 x 4 x 37	4	
P-B-G446G	soffits	1/2 x 4 x 46 1/2	2	
P-1442	fascia	1 x 4 x 42	4	
P-1470G	fascia	1 x 4 x 70 1/2	2	
P-1471YA	gable fascia	1 x 4 x 71	4	
P-H-RFLT12	roofing felt	1 ft x 5 ft	5 sq ft	not shown
P-H-RCAP24	ridge caps	24"	18	not shown
P-H-MFLASS	roof flashing	3" x 12"	36	not shown

C1210

H1210



PART #	DESCRIPTION	DIMENSIONS (where app.)	# OF PCS	CODE
TRIM PARTS				
P-1226	gable trim	1 x 2 x 26	2	
P-1279C	trim	1 x 2 x 79 1/4	2	
P-1280G	trim	1 x 2 x 80 1/2	8	
P-13C79C	trim	1 x 3 1/4 x 79 1/4	4	
P-B-G445	skirting	1/2 x 4 x 45	5	
P-B-G645	skirting	1/2 x 6 x 45	9	
P-B-G633	skirting	1/2 x 6 x 33	8	
P-14B48	door skirting	1 x 4 1/8 x 48	1	
P-1348	door trim (hor.-wide)	1 x 3 x 48	1	not shown
P-11K48	door trim (hor.-narrow)*	1 x 1 3/4 x 48	1	

*door trim (narrow) is used when the door is located on the ridge side of the shed