

G & T HOLDINGS

15 Pc. Fast Framer Universal Building Kit

MADE IN U.S.A.

Tools needed: Hammer, Tape, Saw, 2' Level, Screwdriver

INSTRUCTIONS

1. Cut all materials required for enclosure
2. Using 1 1/4" screws, attach angle connector between two roof boards. Repeat twice forming three "V's". Fig. 1-1
3. Attach an angle connector to each end of the three "V's" formed by the roof boards.
4. While lying flat on the ground attach a leg board in each of the angle connectors, forming three arches. Fig. 1-2
5. Secure a base connector on each end of the width boards so the angle of the connector faces the center of the board.
6. Turn width boards on their side and insert the base of the leg board in the base connector.
7. While arches are lying flat on the ground, trim and secure roof board bracing using 1 1/2" screws. Fig. 1-3
8. Stand up end arch and temporarily attach a diagonal board to it, similar to a kickstand, allowing it to stand freely. (Repeat on opposite end)
9. Insert top center horizontal board so ends are flush with sides of angle connectors.
10. Insert remaining arch in between ends so the center of the width board is 36" from each end.
11. Attach base horizontal boards and measure to ensure the enclosure is square. Do this by measuring diagonally from corner to corner. Adjust until both diagonal measurements are equal within 1/8 of an inch. Fig 1-4
12. Check to ensure that arches are standing level vertically, then cut and secure diagonal side bracing.
13. After bracing is attached, remove temporary support boards and attach the remaining two horizontal boards in the outer angle connectors. Fig 1-5

Materials List (8'x6' Enclosure) (Outside dimensions)

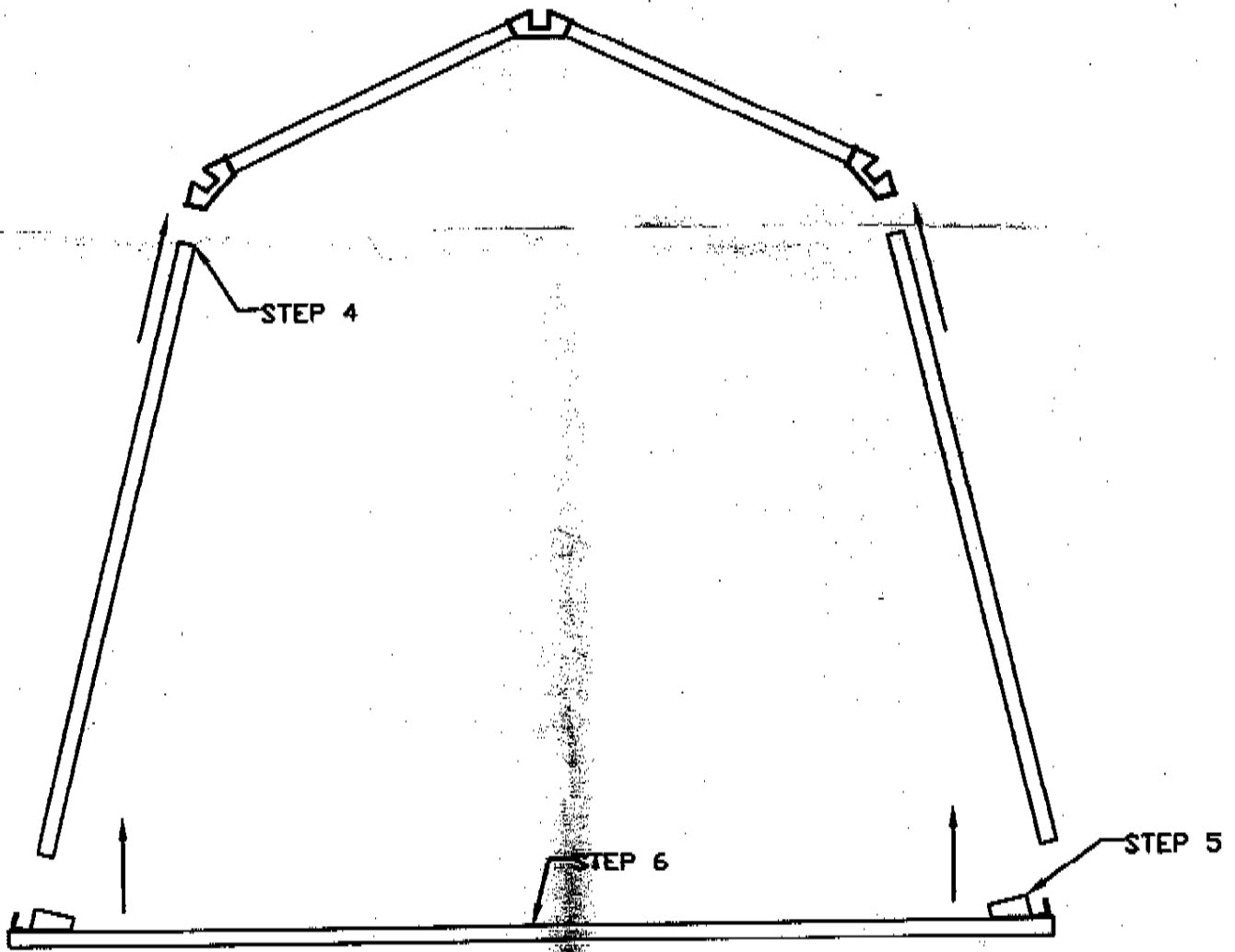
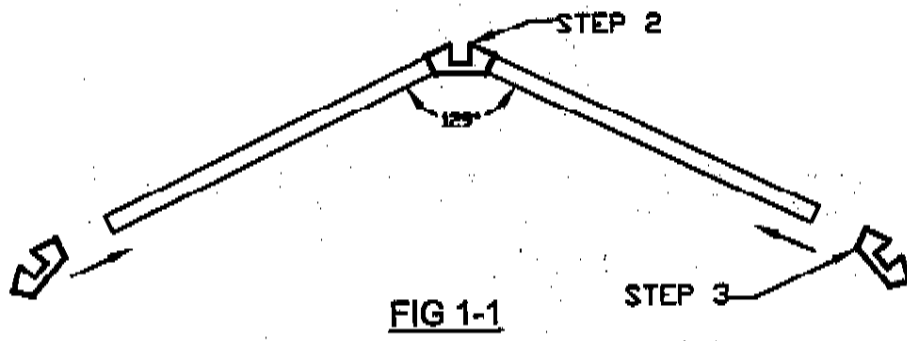
Cut List

| | | |
|-------------------------------|---------------------------------------|-------------------|
| 15 - 8' 2x2's | 5 Horizontal Boards cut to 72" | (Cut from 5 - 8') |
| | 6 Leg Boards cut to 59" | (Cut from 6 - 8') |
| | 6 Roof Boards cut to 32" | (Cut from 2 - 8') |
| | 2 Temporary braces | (Use 2 - 8') |
| 3 - 8' pressure treated 2x4's | 3 - 96" pressure treated Width Boards | (Use 3 - 8') |
| 5 - 8' 1x4's | 2 - 96" 1x4 braces | (Use 2 - 8') |
| | 9 - 32" 1x4 roof board braces | (Cut from 3 - 8') |

Hardware: 60 Pcs. #10 x 1 1/4" screws - 48 Pcs. #10 x 1 1/2" screws

Tools required: Hammer, Tape measure, Saw, Level, Screwdriver

For FREE Color Catalog, send SASE to G & T HOLDINGS
P.O. Box 216 • Big Arm, Montana 59910 — 1-406-849-5174 • FAX 1-406-849-5301



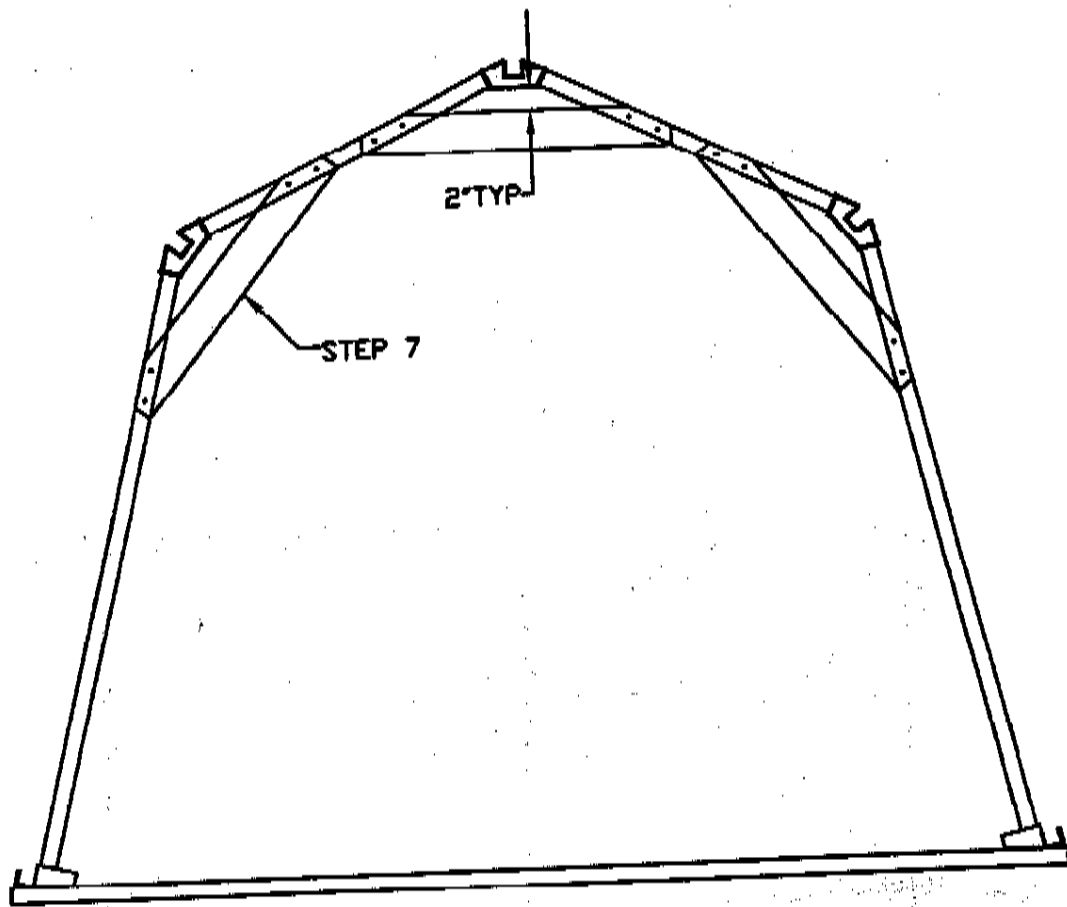


FIG 1-3

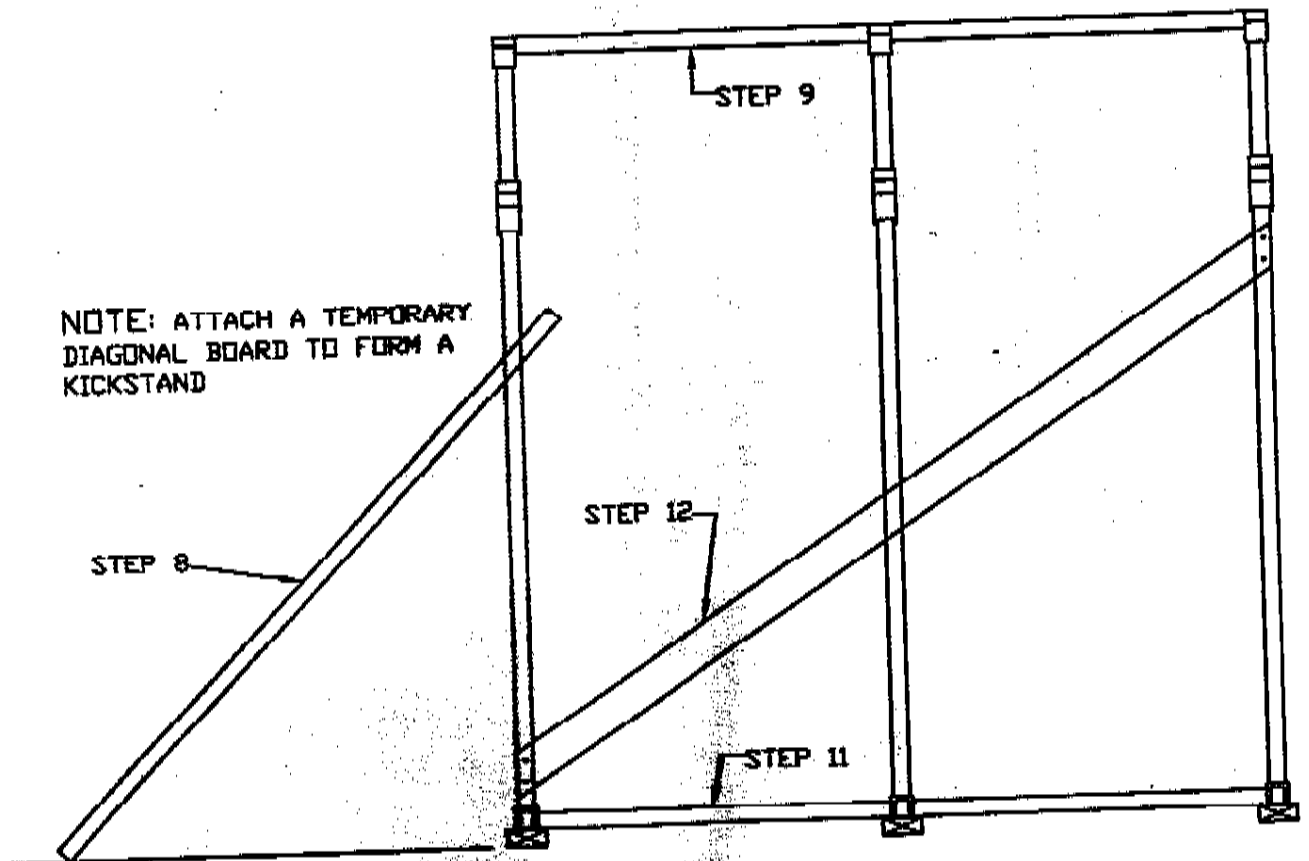


FIG 1-4

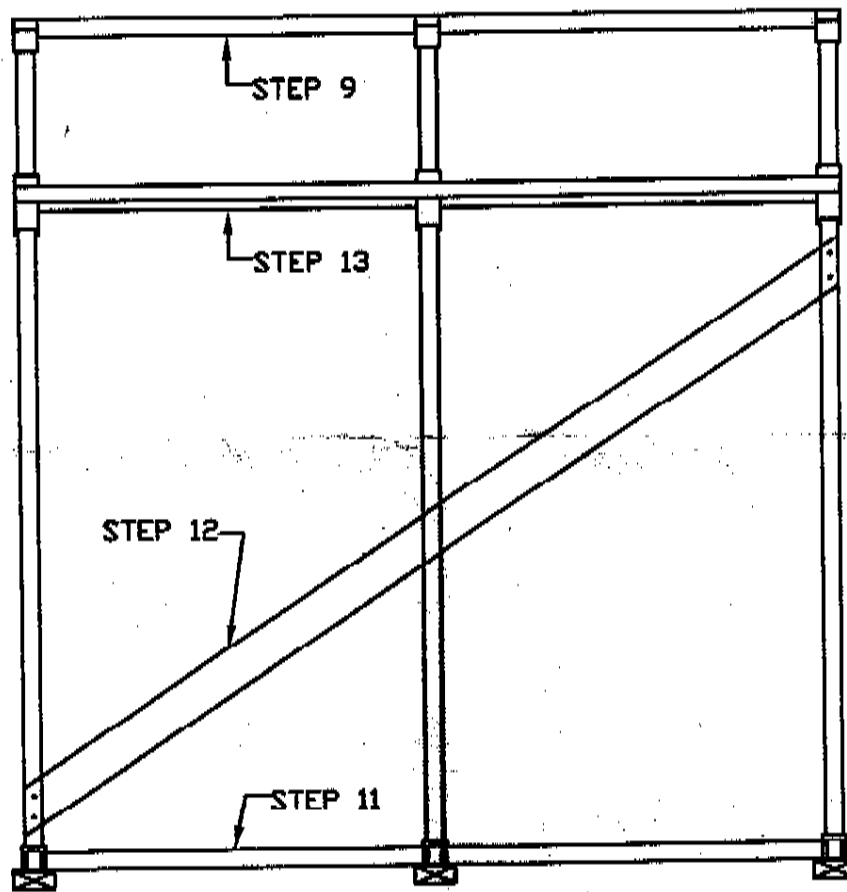


FIG 1-5