



# FIBERBUILT UMBRELLAS™

## 175 LB UMBRELLA BASE FILLING INSTRUCTIONS

### PARTS INCLUDED

- 1 Aluminum Sleeve
- 2 Tap Con Mounting Screws
- 1 3/16" Screw Pin with Nut

### TOOLS REQUIRED

- 2 Bags of 80 LB Concrete
- 5 Gallon Bucket
- Drill & 3/16 drill bit

### STEP-BY-STEP INSTRUCTIONS

- 1) Remove umbrella base and parts from box.
- 2) Place umbrella base upside down on the 5 gallon bucket (fig. 1).
- 3) Insert aluminum sleeve into hole provided so that the rectangular plate sits flush against the hole (fig. 2).
- 4) Place mounting screws (tips down) in the 2 outer holes located at each end of the metal plate (fig. 3).
- 5) Mix concrete according to directions on bag.
- 6) Pour mixed concrete into base and distribute evenly until it is flush with the bottom lip of the umbrella base. NOTE: concrete will cover metal plate and screws.
- 7) Let the base set, in the present position, until the time specified on bag of concrete.
- 8) Once concrete is set, turn base right side up and insert the bottom pole of the umbrella.
- 9) Using drill and drill bit, drill hole into umbrella pole through existing hole in aluminum sleeve and secure pole with screw pin and nut (fig.4 & fig 5).



Figure 1

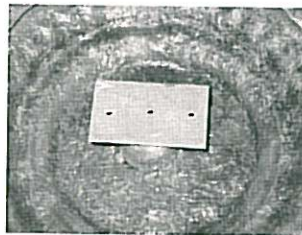


Figure 2



Figure 3

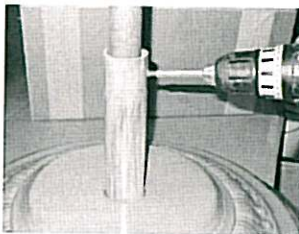


Figure 4

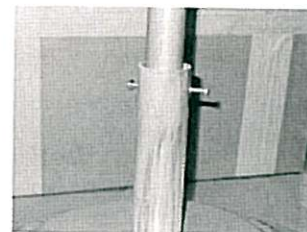


Figure 5

**Flexibility Is Our Greatest Strength™**